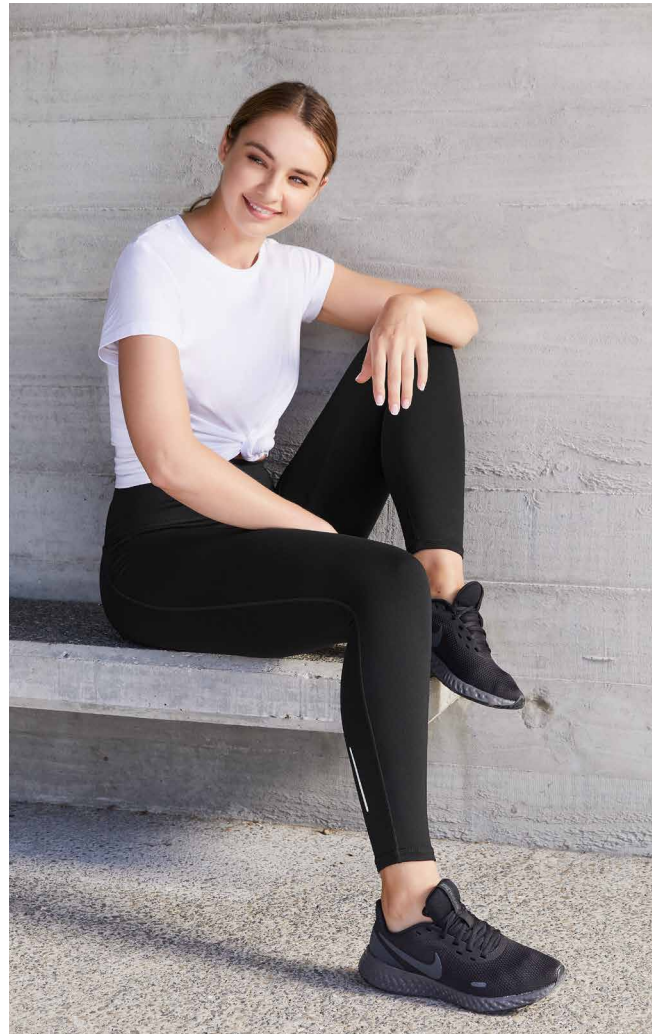


ACTIVEWEAR



LUNA RANGE

NEW



It has pockets! Smooth, quick-drying fabric and 4-way stretch delivers comfortable, unrestricted movement for the most active of workouts.



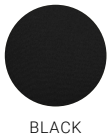
L323LT WOMENS 7/8 LENGTH
L323LS WOMENS BIKE SHORT

FABRIC 72% Certified Recycled PET Polyester, 28% Elastane
 • 250 GSM • BIZ COOL™ Breathable 4-Way Stretch

FEATURES Smooth 4-way stretch fabric is cool and quick-drying • Two side pockets to hold access cards or phone • Wide 'no-dig' waistband and flat ergonomic seams • 7/8 Length designed to sit above the ankle - 61cm inseam
 • Bike length is not too short or long - 21cm inseam

This garment has been made using recycled polyester resulting in the equivalent of up to 13 plastic bottles being diverted from landfill.

| L323LT WOMENS FITTED | XXS | XS | S | M | L | XL | 2XL | 3XL |
|--------------------------------|------|------|------|------|------|------|------|------|
| GARMENT ½ WAIST STRETCHED (CM) | 38 | 41 | 44 | 47 | 50 | 53 | 59 | 62 |
| GARMENT ½ WAIST RELAXED (CM) | 27.5 | 30.5 | 33.5 | 36.5 | 39.5 | 42.5 | 48.5 | 51.5 |
| L323LS WOMENS FITTED | XXS | XS | S | M | L | XL | 2XL | |
| GARMENT ½ WAIST STRETCHED (CM) | 38 | 41 | 44 | 47 | 50 | 53 | 59 | |
| GARMENT ½ WAIST RELAXED (CM) | 27.5 | 30.5 | 33.5 | 36.5 | 39.5 | 42.5 | 48.5 | |



BLACK

FLEX LEGGINGS

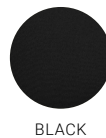


L514LL WOMENS FULL LENGTH
L513LT WOMENS 3/4 LENGTH

FABRIC BIZ COOL™ 89% Nylon, 11% Elastane, 4-Way Stretch Fabric • Power Stretch Performance Fabric with No 'Show-through' • 310 GSM • UPF 50+

FEATURES Extra wide comfort waistband with flat seams • Waistband can be worn up for more coverage or folded down onto the hip • Reflective visibility tape leg feature • Internal key fob pocket

| L514LL, L513LT WOMENS MODERN FIT | XXS | XS | S | M | L | XL | 2XL |
|----------------------------------|-----|------|------|------|------|------|------|
| GARMENT ½ WAIST STRETCHED (CM) | 37 | 40 | 44 | 48 | 52 | 55.5 | 63.5 |
| GARMENT ½ WAIST RELAXED (CM) | 28 | 30.5 | 33.5 | 36.5 | 39.5 | 42.5 | 48.5 |



BLACK

Our best selling active legging delivers high level performance and fit. Made with a quality 4-way stretch cotton-feel fabric and soft high waistband that hugs and holds in all the right places.

ACTIVEWEAR



NEO PANT

TP927M MENS
 TP927L WOMENS
 TP927K KIDS

FABRIC Black, Navy: 60% Polyester, 40% Cotton • Grey Marle: 65% Cotton, 28% Polyester, 7% Viscose • Double-faced Interlock fabric, soft against skin

PANT FEATURES Ergonomic fit • Waistband with drawstring • Mens style features zippered side pockets, regular fit that narrows at the ankle, knitted cuff • Womens style features side pockets, slim leg with ankle zips for easy on/off



| TP927M MENS MODERN FIT | XS | S | M | L | XL | 2XL | 3XL |
|----------------------------------|------|----|------|----|----|------|-----|
| GARMENT 1/2 WAIST STRETCHED (CM) | 46 | 49 | 52 | 55 | 58 | 61.5 | 65 |
| GARMENT 1/2 WAIST RELAXED (CM) | 37 | 40 | 43 | 46 | 49 | 52.5 | 56 |
| TP927L WOMENS MODERN FIT | XS | S | M | L | XL | 2XL | |
| GARMENT 1/2 WAIST STRETCHED (CM) | 41.5 | 45 | 48.5 | 52 | 57 | 60.5 | |
| GARMENT 1/2 WAIST RELAXED (CM) | 31.5 | 35 | 38.5 | 42 | 47 | 50.5 | |
| TP927K KIDS MODERN FIT | 4/6 | 8 | 10 | 12 | 14 | | |
| GARMENT 1/2 WAIST STRETCHED (CM) | 35 | 37 | 39 | 41 | 43 | | |
| GARMENT 1/2 WAIST RELAXED (CM) | 26 | 28 | 30 | 32 | 34 | | |



Warm up on the track or take it to the street with this versatile modern sweat pant. Premium luxe-touch fabric styled with a slimmer leg that tapers to the ankle for a non-bulky fit.

ACTIVEWEAR



WOMENS ANKLE ZIP

SCORE PANT



Be ready for the cooler weather with these essential jogger style track pants. Easy fitting through the thigh with a tapered leg that delivers just the right amount of comfort and streamlined style.



TP226M MENS
TP226L WOMENS
TP226K KIDS

FABRIC 100% Polyester Performance Fleece • 210 GSM • UPF Rating: 50+

FEATURES Modern look pull-on jogger pant with tapered leg • Smooth outer knit with fleecy inner keeps you warm in chilly weather • Wide flat elasticated waistband with drawstring for a comfortable fit • Full length with knitted rib ankle cuffs • Side pockets to stow away belongings

| TP226M MENS MODERN FIT | S | M | L | XL | 2XL | 3XL | 5XL |
|--------------------------------|------|------|------|------|------|------|------|
| GARMENT ½ WAIST STRETCHED (CM) | 52 | 55 | 58 | 61 | 64.5 | 68 | 71.5 |
| GARMENT ½ WAIST RELAXED (CM) | 34 | 37 | 40 | 43 | 46.5 | 50 | 53.5 |
| TP226L WOMENS MODERN FIT | XS | S | M | L | XL | 2XL | |
| GARMENT ½ WAIST STRETCHED (CM) | 42 | 45.7 | 49.5 | 53.2 | 57 | 60.7 | |
| GARMENT ½ WAIST RELAXED (CM) | 32.5 | 36.2 | 40 | 43.7 | 47.5 | 51.2 | |
| TP226K KIDS MODERN FIT | S | M | L | | | | |
| GARMENT ½ WAIST STRETCHED (CM) | 35 | 39 | 43 | | | | |
| GARMENT ½ WAIST RELAXED (CM) | 27.5 | 31.5 | 34.5 | | | | |



MONTEREY TOP



SW931M MENS
SW931L WOMENS

FABRIC 100% Polyester Knit • 220 GSM

FEATURES Clean surface finish with honeycombed inner fleece for added warmth • Neat 1/2 zip collar and flat-locked seams for comfort • Longer line with straight finished hem and cuff

| SW931M MENS MODERN FIT | XS | S | M | L | XL | 2XL | 3XL | 5XL |
|--------------------------|------|------|------|------|------|------|-----|-----|
| GARMENT ½ CHEST (CM) | 50.5 | 53.5 | 56.5 | 59.5 | 63 | 66.5 | 70 | 77 |
| SW931L WOMENS MODERN FIT | XS | S | M | L | XL | 2XL | | |
| GARMENT ½ CHEST (CM) | 45.5 | 49 | 52.5 | 57 | 61.5 | 66 | | |



BLACK SOLID



NAVY SOLID



GREY MARLE/
BLACK

A versatile mid-layer active top that's great for casual corporate uniforms. Minimalist details keep it simple and clean. The semi-fitted shape, skims over the body for a just-right fit.

ACTIVEWEAR



BALANCE MID-LAYER TOP

NEW SIZE

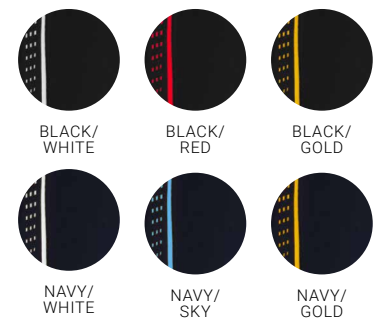


STYLE TIP Coordinates with Balance Polo P8 & Score Pant P220

SW225M ADULTS
SW225K KIDS

FABRIC 100% Polyester Performance Fleece • 210 GSM
• UPF Rating: 50+

FEATURES Lightweight, stretch mid-layer or warm up training top
• Brushed fleecy inner keeps you warm • Contoured funnel neck with 1/2 zip for easy on/off • Extra long sleeve with thumb loops for added hand warmth when needed
• Dynamic piping and print details • Longer length with side splits and stepped hem for more coverage when moving



| SW225M ADULTS MODERN FIT | XS | S | M | L | XL | 2XL | 3XL | 5XL |
|--------------------------|------|----|------|----|----|-----|-----|-----|
| GARMENT ½ CHEST (CM) | 51.5 | 54 | 56.5 | 59 | 63 | 67 | 72 | 82 |
| SW225K KIDS MODERN FIT | S | M | L | | | | | |
| GARMENT ½ CHEST (CM) | 38 | 43 | 48 | | | | | |

A warm soft knit layer in a 1/2 zip design goes on easily over your training clothes.

ACTIVEWEAR



ALL IN FOR THE GAME

Get ready to be a part of something big. Whether you're playing in front of thousands, or just out for a solo run, your team kit shows you belong. It's your identity, it's your community, it's your pride in being part of a club.

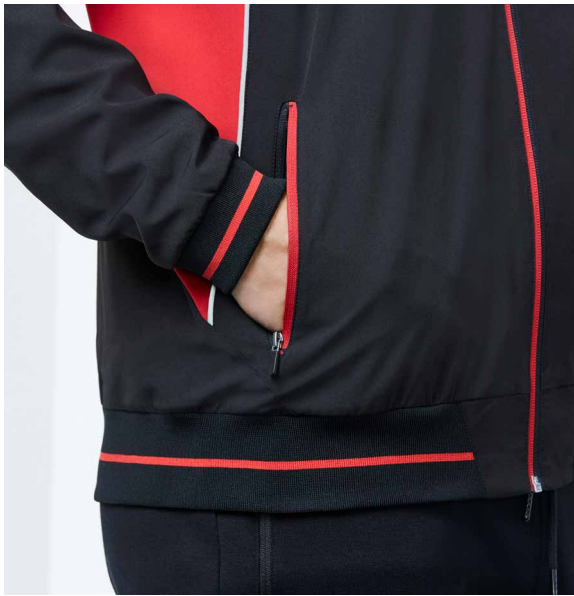
Our teamwear gear is built to help you play your best active life – no matter your age or your code, professional or amateur - we're right there with you, all in!



**FIND MORE
INSPIRATION
FROM OUR
TEAMWEAR
GUIDE ONLINE**



TITAN JACKET



J920M ADULTS
J920K KIDS

FABRIC Outer: 4-Way Stretch 94% Polyester, 6% Elastane
• Lining: 100% Polyester Mesh (Body) Woven (Sleeve) • UPF 50+

FEATURES Attached hood, two-tone zip, reflective piping • Side zippered pockets • Laser cut feature on back provides targeted ventilated • Full knitted hem and cuff

| J920M ADULTS MODERN FIT | XS | S | M | L | XL | 2XL | 3XL | 5XL |
|-------------------------|------|------|------|------|------|------|------|------|
| GARMENT ½ CHEST (CM) | 52.5 | 55.5 | 58.5 | 61.5 | 64.5 | 67.5 | 71.5 | 79.5 |
| J920K KIDS MODERN FIT | 4-6 | 8 | 10 | 12 | 14 | | | |
| GARMENT ½ CHEST (CM) | 42 | 45 | 48 | 51 | 54 | | | |



Elevate your team with our most advanced active jacket yet. Packed with features this jacket is the ultimate all-rounder with 4-way stretch fabric, mesh lining and laser cut details for targeted ventilation.

ACTIVEWEAR

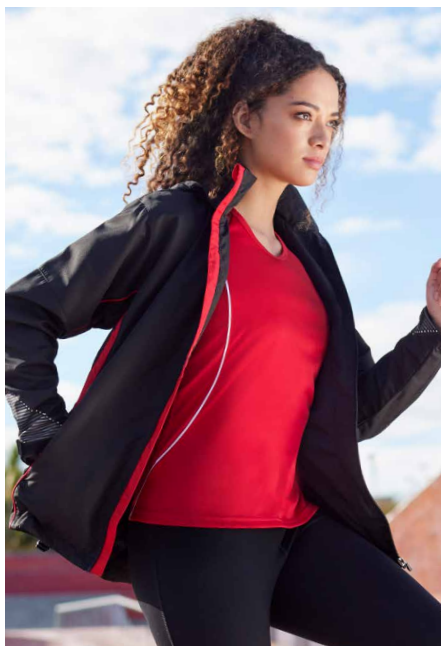


LASER CUT
FEATURE ON BACK

RAZOR JACKET & PANT



Made with special attention to every detail, this track set is packed with design features that'll get you noticed both on and off the field. Moisture wicking BIZ COOL™ for optimum active comfort.



- J408M** ADULTS JACKET
- J408K** KIDS JACKET
- TP409M** ADULTS PANT
- TP409K** KIDS PANT

FABRIC Outer: 100% Polyester Jacquard • Lining: BIZ COOL™ 100% Anti-Snag Diamond Mesh • UPF 50+

JACKET FEATURES Grid mesh underarm panels for breathability • Stow-away hood • Sleeve print feature with adjustable cuff fasteners • 2 Zippered pockets • Contrast panels, piping and inside placket

PANT FEATURES Grid mesh stretch side panels for comfort • Reflective knee piping • Elasticated waist with inside tie • 2 Side pockets, back zippered coin/key pocket • 1/2 Zippered leg, with taffeta lining to ease over trainers

| J408M ADULTS MODERN FIT | XS | S | M | L | XL | 2XL | 3XL | 5XL |
|--------------------------------|-----|----|----|----|----|-----|-----|-----|
| GARMENT ½ CHEST (CM) | 58 | 60 | 62 | 64 | 66 | 68 | 70 | 74 |
| J408K KIDS MODERN FIT | 4-6 | 8 | 10 | 12 | 14 | | | |
| GARMENT ½ CHEST (CM) | 45 | 48 | 51 | 54 | 57 | | | |
| TP409M ADULTS MODERN FIT | XS | S | M | L | XL | 2XL | 3XL | 5XL |
| GARMENT ½ WAIST STRETCHED (CM) | 48 | 50 | 52 | 54 | 56 | 60 | 66 | 78 |
| GARMENT ½ WAIST RELAXED (CM) | 31 | 33 | 35 | 37 | 39 | 42 | 48 | 60 |
| TP409K KIDS MODERN FIT | 4-6 | 8 | 10 | 12 | 14 | | | |
| GARMENT ½ WAIST STRETCHED (CM) | 40 | 43 | 46 | 49 | 52 | | | |
| GARMENT ½ WAIST RELAXED (CM) | 26 | 28 | 30 | 32 | 34 | | | |



FLASH JACKET & PANT



J3150 ADULTS JACKET
J3150B KIDS JACKET
TP3160 ADULTS PANT
TP3160B KIDS PANT



FABRIC Outer: 100% Polyester Ripstop with Microfibre Panels • Lining: Soft Touch Single Jersey (Jacket Body and Upper Pant Leg) • Lining: 100% Polyester Taffeta (Jacket Sleeve and Lower Pant Leg)

JACKET FEATURES Raglan sleeve top with Flash splice and twin stripes • Full zip front with 2 zippered pockets • Zipper access for embroidery • Elasticated sleeve cuffs with adjustable fasteners

PANT FEATURES Elasticated waist with drawstring • 2 Open side pockets and back zipper pocket • 1/2 Zippered leg, to ease over trainers

| J3150 ADULTS MODERN FIT | XS | S | M | L | XL | 2XL | 3XL | 5XL |
|-------------------------|----|----|----|----|----|-----|-----|-----|
| GARMENT ½ CHEST (CM) | 58 | 60 | 62 | 64 | 66 | 68 | 70 | 74 |

| J3150B KIDS MODERN FIT | 4-6 | 8 | 10 | 12 | 14 |
|------------------------|-----|----|----|----|----|
| GARMENT ½ CHEST (CM) | 45 | 48 | 51 | 54 | 57 |

| TP3160 ADULTS MODERN FIT | XS | S | M | L | XL | 2XL | 3XL | 5XL |
|--------------------------------|----|----|----|----|----|-----|-----|-----|
| GARMENT ½ WAIST STRETCHED (CM) | 48 | 50 | 52 | 54 | 56 | 60 | 66 | 78 |
| GARMENT ½ WAIST RELAXED (CM) | 31 | 33 | 35 | 37 | 39 | 42 | 48 | 60 |

| TP3160B KIDS MODERN FIT | 4-6 | 8 | 10 | 12 | 14 |
|--------------------------------|-----|----|----|----|----|
| GARMENT ½ WAIST STRETCHED (CM) | 40 | 43 | 46 | 49 | 52 |
| GARMENT ½ WAIST RELAXED (CM) | 26 | 28 | 30 | 32 | 34 |

Classic team jacket & pant made from durable and lightweight ripstop fabric. Dynamic contrast panels designed to highlight your logo. Jersey knit lining keeps you warm during training.

ACTIVEWEAR



TACTIC SHORTS



This quick drying, 4-way stretch, mid-length athletic short is the perfect multi-sport short. Quality performance stretch microfibre fabric is engineered with mesh panels for added ventilation.



ST511M MENS
ST512L WOMENS
ST511K KIDS

FABRIC BIZ COOL™ 92% Breathable Polyester, 8% Elastane Stretch

- Quick dry
- 130 GSM

FEATURES Mesh panels for added breathability • Reflective tape leg feature • Internal quick drying lightweight fabric briefs • “No twist” elastic waist with internal soft drawcord • Internal key fob pocket

| ST511M MENS MODERN FIT | S | M | L | XL | 2XL | 3XL | 5XL |
|--------------------------------|------|------|------|------|------|------|------|
| GARMENT ½ WAIST STRETCHED (CM) | 53.5 | 56 | 58.5 | 61 | 63.5 | 66 | 71 |
| GARMENT ½ WAIST RELAXED (CM) | 38 | 40.5 | 43 | 45.5 | 48 | 50.5 | 56.5 |
| ST512L WOMENS MODERN FIT | XS | S | M | L | XL | 2XL | |
| GARMENT ½ WAIST STRETCHED (CM) | 48 | 51.5 | 55 | 59 | 64 | 71 | |
| GARMENT ½ WAIST RELAXED (CM) | 37.5 | 41.5 | 44.5 | 47.5 | 51.5 | 57.5 | |
| ST511K KIDS MODERN FIT | 4-6 | 8 | 10 | 12 | 14 | 16 | |
| GARMENT ½ WAIST STRETCHED (CM) | 39 | 42 | 44 | 46 | 48 | 50 | |
| GARMENT ½ WAIST RELAXED (CM) | 22.5 | 25.5 | 27.5 | 29.5 | 31.5 | 33.5 | |



BLACK



NAVY

CIRCUIT SHORTS

The ultimate mid-length sports short. Breathable fabric allows freedom of movement whether running, jumping or playing. Flat seams and soft elastic waistband for anti-chaffing comfort.



ST711M MENS
ST711K KIDS

FABRIC BIZ COOL™ 100% Micro Polyester Stretch Knit • Durable Resin finish

FEATURES Lightweight knit fabric for ease of movement • Flat seams and soft elastic waistband for anti-chaffing comfort • Silver reflective trims help you stand out • Mid-length • Concealed zip pocket on right hand side

| ST711M MENS MODERN FIT | S | M | L | XL | 2XL | 3XL | 5XL |
|--------------------------------|-----|------|----|------|-----|-----|-----|
| GARMENT ½ WAIST STRETCHED (CM) | 51 | 53.5 | 56 | 58.5 | 61 | 65 | 73 |
| GARMENT ½ WAIST RELAXED (CM) | 35 | 37.5 | 40 | 42.5 | 45 | 49 | 57 |
| ST711K KIDS MODERN FIT | 4-6 | 8 | 10 | 12 | 14 | 16 | |
| GARMENT ½ WAIST STRETCHED (CM) | 37 | 40 | 42 | 44 | 46 | 48 | |
| GARMENT ½ WAIST RELAXED (CM) | 23 | 26 | 28 | 30 | 32 | 34 | |



BLACK



NAVY



GREY

BIZ COOL™ SHORTS

ACTIVEWEAR

An everyday essential, this value driven mesh sport short is a great basic for schools and sports alike. 100% Breathable BIZ COOL™ mesh knit fabric is durable and colourfast.



ST2020 MENS
ST2020B KIDS

FABRIC BIZ COOL™ 100% Breathable Polyester • Mesh Knit • 160 GSM

FEATURES Fully elasticated waist with matching draw cord • Side splits on straight hem and 2 side pockets

| ST2020 MENS MODERN FIT | XS | S | M | L | XL | 2XL | 3XL | 5XL |
|--------------------------------|----|------|----|------|----|------|-----|-----|
| GARMENT ½ WAIST STRETCHED (CM) | 47 | 49.5 | 52 | 54.5 | 57 | 59.5 | 62 | 66 |
| GARMENT ½ WAIST RELAXED (CM) | 35 | 37.5 | 40 | 42.5 | 45 | 47.5 | 50 | 54 |
| ST2020B KIDS MODERN FIT | 6 | 8 | 10 | 12 | 14 | | | |
| GARMENT ½ WAIST STRETCHED (CM) | 35 | 37 | 39 | 41 | 44 | | | |
| GARMENT ½ WAIST RELAXED (CM) | 23 | 25 | 27 | 29 | 32 | | | |

