

BOULEVARD STYLE

ISSUE No. 01

FEEL THE DIFFERENCE



Boulevard
BY BIZ CORPORATES

FEEL THE DIFFERENCE

CONTENTS



LUXURY SHIRTING

JUST FOR LADIES

- 02 **VERONA**
- 04 **SOLANDA**
- 06 **MAE** ADVATEXCOOL
- 07 **ABBY** ADVATEXCOOL
- 08 **LILA**
- 09 **SANDY** ADVATEXCOOL
- 10 **LEAH** ADVATEXCOOL
- 11 **ELLA** ADVATEXCOOL

LADIES AND MENS CO-ORDINATES

- 12 **FIFTH AVENUE**
- 14 **BORDEAUX**
- 15 **VERMONT**
- 16 **LINDSEY** ADVATEX
- 18 **TONI** ADVATEX
- 20 **SPRINGFIELD**
- 22 **NEWPORT**
- 24 **CALAIS**
- 26 **HERNE BAY**
- 28 **HUDSON**

POLISHED PIECES

ACCESSORIES

- 30 **LADIES BELTS**
- 30 **LADIES SCARVES**
- 30 **MENS BELTS**
- 30 **MENS CUFFLINKS**

THIS STYLEBOOK EXCLUSIVELY
FEATURES SHIRTS & KNITS
FROM THE BOULEVARD
RANGE BY BIZ CORPORATES.

FOR ADDITIONAL OPTIONS
PLEASE VISIT
WWW.BIZCORPORATES.COM



Boulevard
BY BIZ CORPORATES

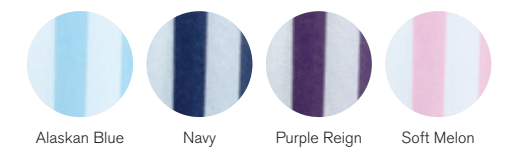
WITH A FOCUS ON
AUTHENTICITY AND
QUALITY, THE BOULEVARD
RANGE REVEALS UNIQUE
SHIRTING THAT IS TRUE
TO FIT AND FUNCTION.

THE SHIRTING IS
COMPLEMENTED BY AN
EQUALLY SPECIAL RANGE
OF ACCESSORIES WHICH
ARE COORDINATED
TO REFLECT A FINE
SENSE OF DRESSING.



VERONA *Boulevard*

- 43610** LADIES LONG SLEEVE SHIRT
- 43612** LADIES SHORT SLEEVE SHIRT



- 100% Polyester, luxe touch
- Ladies semi-fitted design
- Concealed button front
- Inverted back pleat

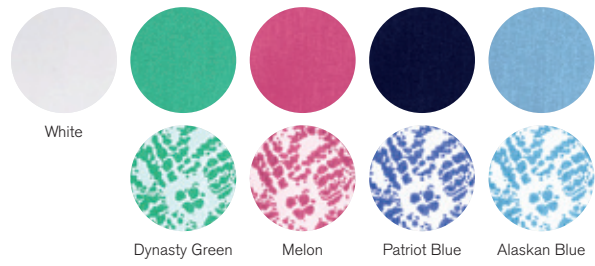
LADIES	4	6	8	10	12	14	16	18	20	22	24	26
1/2 CHEST (CM)	44.75	46	48.5	51	53.5	56	58.5	62	64.5	67	69.5	72



SOLANDA *Boulevard*

PLAIN
40410 LADIES LONG SLEEVE SHIRT
40412 LADIES SHORT SLEEVE SHIRT

PRINT
40510 LADIES LONG SLEEVE SHIRT
40512 LADIES SHORT SLEEVE SHIRT



- 100% Polyester, soft touch
- Ladies semi-fitted open neck 'Y' front design
- Horizontal back yoke pleat feature
- Inverted back box pleat

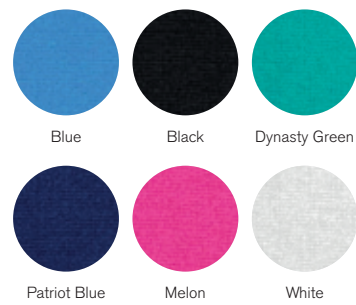
LADIES	4	6	8	10	12	14	16	18	20	22	24	26
1/2 CHEST (CM)	44.7	46	48	51	53.5	56	58.5	62	64.5	67	69.5	72



MAE ADVATEXCOOL

AC41412 LADIES SHORT SLEEVE KNIT TOP

- 95% Polyester 5% Elastane, stretch knit
- Advatex anti-bacterial with cool technology
- Ladies semi-fitted stretch knit design
- Curved 'V' neck and 'Y' feature front tab



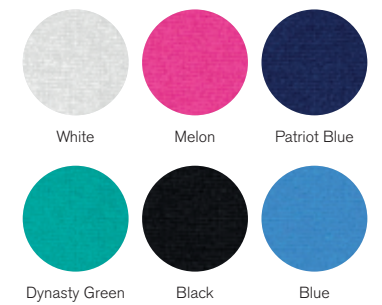
LADIES	4	6	8	10	12	14	16	18	20	22	24	26	28	30	32
1/2 CHEST (CM)	43	44	46	48	50	52	54	56.8	58.8	60.8	62.8	64.8	66.8	68.8	70.8



ABBY ADVATEXCOOL

AC41511 LADIES 3/4 SLEEVE KNIT TOP

- 95% Polyester 5% Elastane, stretch knit
- Advatex anti-bacterial with cool technology
- Ladies semi-fitted stretch knit design
- Feature keyhole front panelled tab



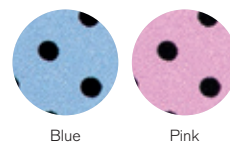
LADIES	4	6	8	10	12	14	16	18	20	22	24	26	28	30	32
1/2 CHEST (CM)	43	44	46	48	50	52	54	56.8	58.8	60.8	62.8	64.8	66.8	68.8	70.8



LILA Boulevard

42312 LADIES SHORT SLEEVE TOP

- 100% Polyester, soft fine crepe spot design
- Ladies semi-fitted design
- Roll neck with keyhole button back neck



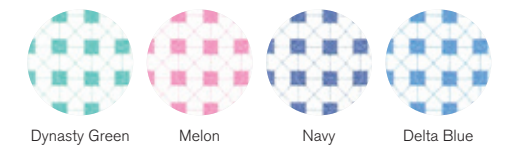
LADIES	4	6	8	10	12	14	16	18	20	22	24	26
1/2 CHEST (CM)	44.5	46	48	51	53.5	56	58.5	62	64.5	67	69.5	72



SANDY ADVATEXCool

AC42412 LADIES PLEAT KNIT TOP

- 95% Polyester 5% Elastane, link print
- Advatex anti-bacterial with cool technology
- Ladies semi-fitted open neck, stretch knit design
- Pleat front



LADIES	4	6	8	10	12	14	16	18	20	22	24	26	28	30	32
1/2 CHEST (CM)	43	44.2	46.7	49.2	51.7	54.2	56.7	60.2	62.7	65.2	67.7	70.2	72.7	75.2	77.7





LEAH ADVATEXCOOL

AC42912 LADIES BUTTON KNIT TOP

- 95% Polyester 5% Elastane, diamond print
- Advatex anti-bacterial with cool technology
- Ladies semi-fitted stretch knit design
- Round neck top with button front



LADIES	4	6	8	10	12	14	16	18	20	22	24	26	28	30	32
1/2 CHEST (CM)	43	44.2	46.7	49.2	51.7	54.2	56.7	60.2	62.7	65.2	67.7	70.2	72.7	75.2	77.7

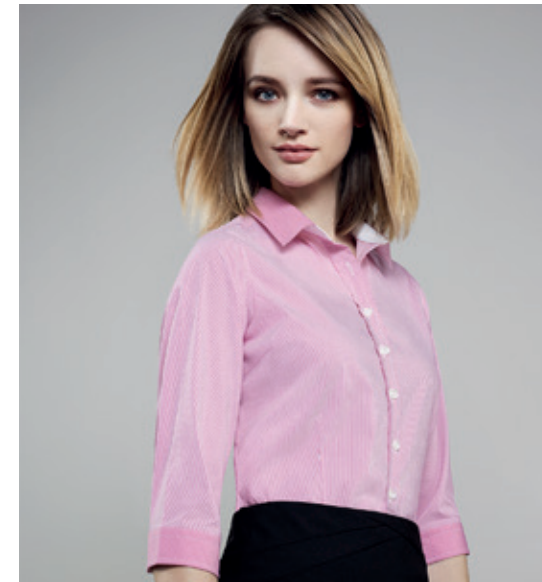
ELLA ADVATEXCOOL

AC42812 LADIES PLEAT KNIT TOP

- 95% Polyester 5% Elastane, diamond print
- Advatex anti-bacterial with cool technology
- Ladies semi-fitted open neck, stretch knit design
- Pleat front



LADIES	4	6	8	10	12	14	16	18	20	22	24	26	28	30	32
1/2 CHEST (CM)	43	44.2	46.7	49.2	51.7	54.2	56.7	60.2	62.7	65.2	67.7	70.2	72.7	75.2	77.7



FIFTH AVENUE

Boulevard



Alaskan Blue Dynasty Green Melon Patriot Blue

- 40110** LADIES LONG SLEEVE SHIRT
- 40111** LADIES 3/4 SLEEVE SHIRT
- 40120** MENS LONG SLEEVE SHIRT
- 40112** MENS SHORT SLEEVE SHIRT

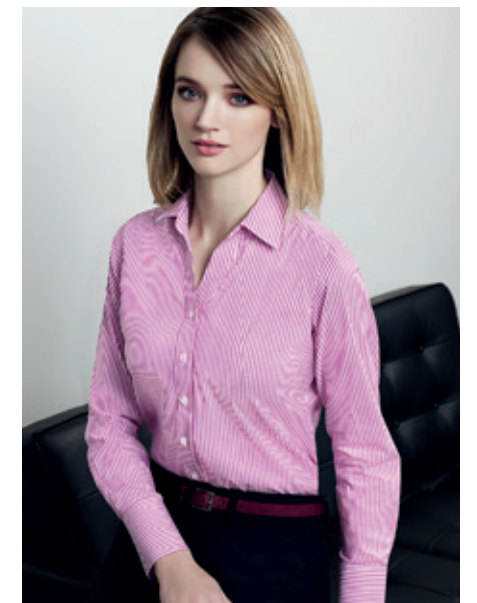
LADIES

- 65% Cotton 33% Polyester 2% Elastane
- Yarn dyed fine stripe, soft textured **stretch** cotton blend
- Ladies semi-fitted design
- Contrast trim collar, inside yoke and inside cuff; grosgrain trim in inside collar stand, placket and inside cuff

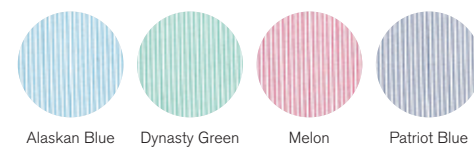
MENS

- 65% Cotton 33% Polyester 2% Elastane
- Yarn dyed fine stripe, soft textured **stretch** cotton blend
- Mens euro-fit with loose pocket
- Contrast trim with grosgrain trim in inside collar stand, placket and inside cuff
- Button down collar and double button cuff

LADIES	4	6	8	10	12	14	16	18	20	22	24	26
1/2 CHEST (CM)	44.3	45.5	48	50.5	53	55.5	58	61.5	64	66.5	69	71.5
MENS	XS	S	M	L	XL	2XL	3XL	4XL	5XL			
NECK (CM)	35-36	37-38	39-40	41-42	43-44	45-46	47-48	49-50	51-52			
1/2 CHEST (CM)	50.5	53	55.5	58	61.5	64.5	68.5	72.5	76.5			



BORDEAUX Boulevard



- 40114 LADIES 3/4 SLEEVE TOP
- 40112 LADIES SHORT SLEEVE TOP

- 65% Cotton 33% Polyester 2% Elastane
- Yarn dyed fine stripe, soft textured **stretch** cotton blend
- Ladies semi-fitted open neck design
- Trim fabric is cleverly applied to the placket, creating a contrast trim
- Cuff is cut on the bias for feature
- Inverted back yoke pleats and side splits for comfort

LADIES	4	6	8	10	12	14	16	18	20	22	24	26
1/2 CHEST (CM)	44.3	45.5	48	50.5	53	55.5	58	61.5	64	66.5	69	71.5

VERMONT Boulevard



- 40210 LADIES LONG SLEEVE SHIRT
- 40212 LADIES SHORT SLEEVE SHIRT
- 40220 MENS LONG SLEEVE SHIRT

LADIES

- 60% Cotton 40% Polyester
- Yarn dyed wide stripe, soft textured **mechanical stretch** cotton blend
- Ladies semi-fitted open neck design
- Wider cuff width, contrast bias fabric inside cuff for cuff fold-back feature

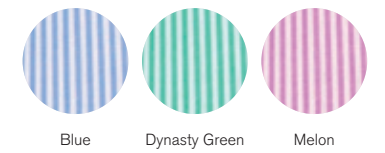
MENS

- 60% Cotton 40% Polyester
- Yarn dyed wide stripe, soft textured **mechanical stretch** cotton blend
- Mens euro-fit with loose pocket
- Spread collar and French cuff

LADIES	4	6	8	10	12	14	16	18	20	22	24	26
1/2 CHEST (CM)	44.3	45.5	48	50.5	53	55.5	58	61.5	64	66.5	69	71.5
MENS	XS	S	M	L	XL	2XL	3XL	4XL	5XL			
NECK (CM)	35-36	37-38	39-40	41-42	43-44	45-46	47-48	49-50	51-52			
1/2 CHEST (CM)	50.5	53	55.5	58	61.5	64.5	68.5	72.5	76.5			



LINDSEY ADVATEX



- A41011** LADIES 3/4 SLEEVE SHIRT
- A41012** LADIES SHORT SLEEVE SHIRT
- A41022** MENS SHORT SLEEVE SHIRT

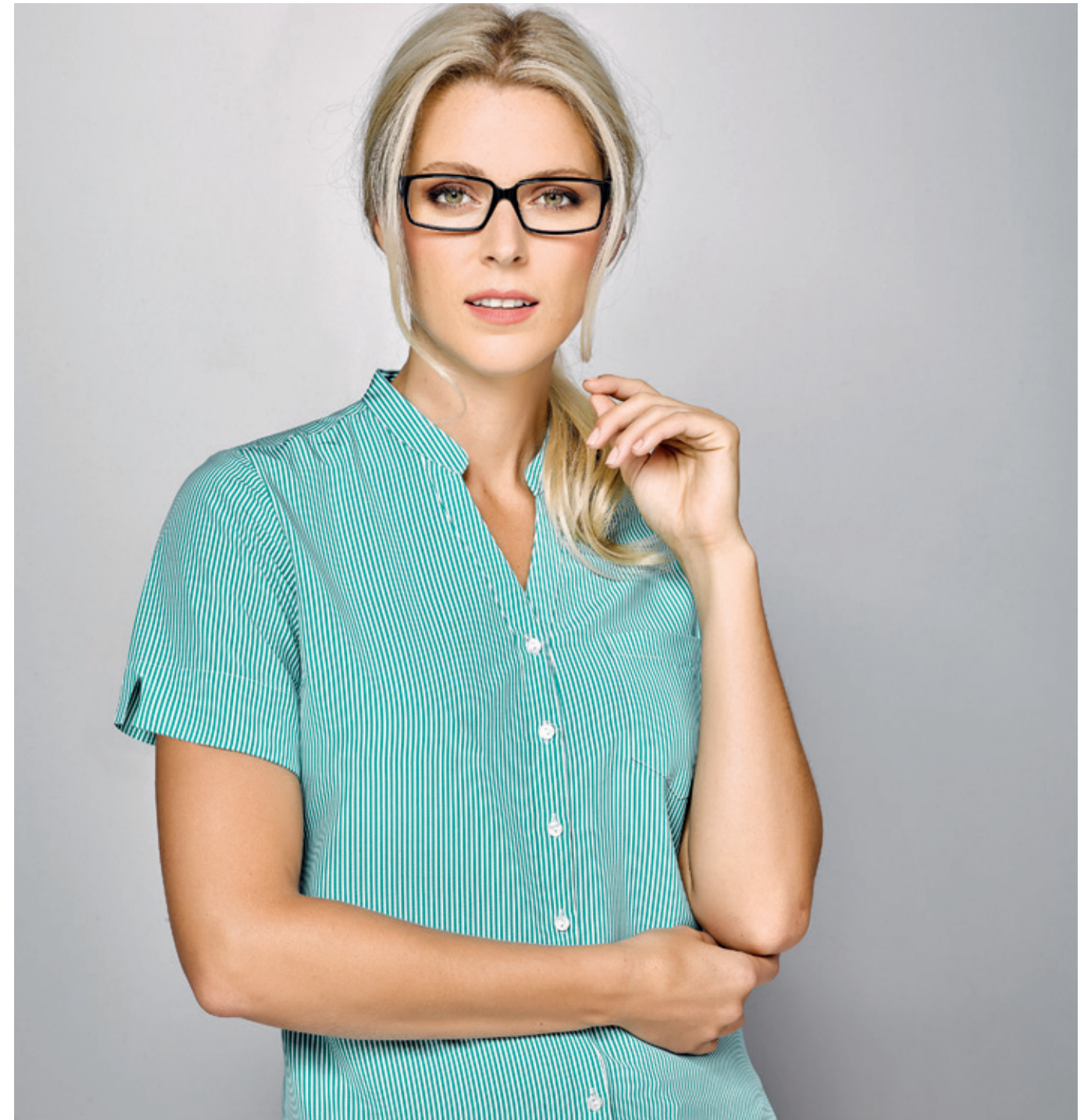
LADIES

- 60% Cotton 40% Polyester, yarn dyed stripe
- Advatex anti-bacterial technology
- Ladies semi-fitted open neck design
- Front pocket and side splits
- Inverted centre action back pleats

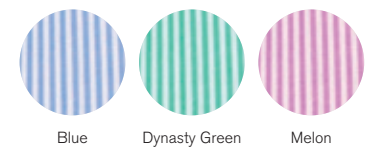
MENS

- 60% Cotton 40% Polyester, yarn dyed stripe
- Advatex anti-bacterial technology
- Mens executive-fit with peaked collar
- Front pocket and 2 action back pleats

LADIES	4	6	8	10	12	14	16	18	20	22	24	26	28	30	32
1/2 CHEST (CM)	44.2	45.5	48	50.5	53	55.5	58	61.5	64	66.5	69	71.5	74	76.5	79
MENS	XS	S	M	L	XL	2XL	3XL	4XL	5XL						
NECK (CM)	35-36	37-38	39-40	41-42	43-44	45-46	47-48	49-50	51-52						
1/2 CHEST (CM)	53	55	57	59	63	66	70	74	78						



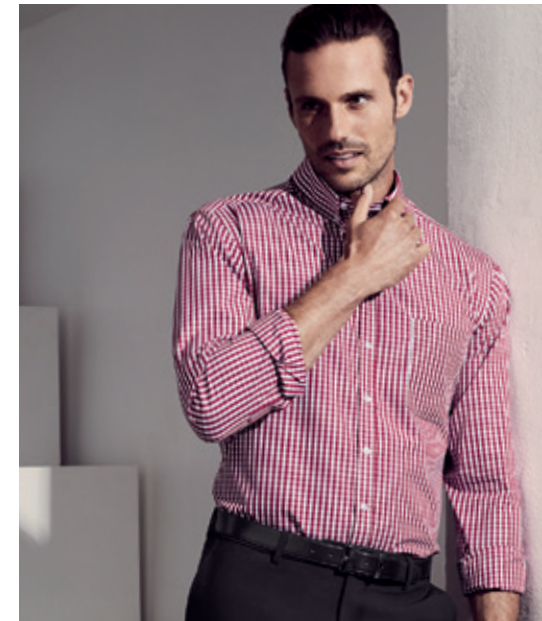
TONI ADVATEX



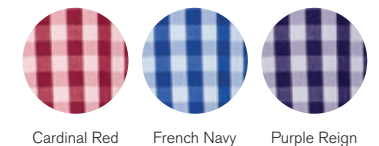
A41312 LADIES SHORT SLEEVE TOP

- 100% Polyester, printed stripe
- Advatex anti-bacterial technology
- Ladies semi-fitted open neck design with front pocket
- Stand collar with inverted centre action back pleat
- Side seam splits & sleeve hem splits

LADIES	4	6	8	10	12	14	16	18	20	22	24	26	28	30	32
1/2 CHEST (CM)	44.2	45.5	48	50.5	53	55.5	58	61.5	64	66.5	69	71.5	74	76.5	79



SPRINGFIELD *Boulevard*



- 43411** LADIES 3/4 SLEEVE SHIRT
- 43412** LADIES SHORT SLEEVE SHIRT
- 43420** MENS LONG SLEEVE SHIRT
- 43422** MENS SHORT SLEEVE SHIRT

LADIES

- 100% Cotton, easy care
- Ladies semi-fitted design
- Open neck 'Y' front with left front pocket
- Bias trim sleeve cuffs & inverted back pleat tucks

MENS

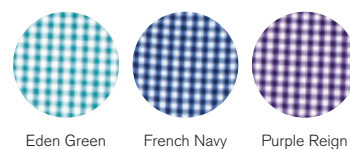
- 100% Cotton easy care
- Mens executive-fit design
- Button collar with left front pocket
- Inverted back pleat tucks

LADIES	4	6	8	10	12	14	16	18	20	22	24	26
1/2 CHEST (CM)	44.25	45.5	48	50.5	53	55.5	58	61.5	64	66.5	69	71.5
MENS	XS	S	M	L	XL	2XL	3XL	4XL	5XL			
NECK (CM)	35-36	37-38	39-40	41-42	43-44	45-46	47-48	49-50	51-52			
1/2 CHEST (CM)	52	54.5	57	59.5	63	66.5	70.5	74.5	78.5			



NEWPORT Boulevard

- 42511** LADIES 3/4 SLEEVE SHIRT
- 42512** LADIES SHORT SLEEVE SHIRT
- 42520** MENS LONG SLEEVE SHIRT
- 42522** MENS SHORT SLEEVE SHIRT



LADIES

- 65% Cotton 33% Polyester 2% Elastane
- Yarn dyed check, soft textured **stretch** cotton blend
- Ladies semi-fitted concealed front placket design
- Contrast stripe inside collar and cuff
- Contrast button and bar tack stitch

MENS

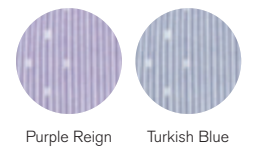
- 65% Cotton 33% Polyester 2% Elastane
- Yarn dyed check, soft textured **stretch** cotton blend
- Mens executive-fit design with front pocket
- Contrast stripe inside collar and cuff with grosgrain;
- Contrast button and bar tack stitch
- Inverted back pleats

LADIES	4	6	8	10	12	14	16	18	20	22	24	26
1/2 CHEST (CM)	44.2	45.5	48	50.5	53	55.5	58	61.5	64	66.5	69	71.5
MENS	XS	S	M	L	XL	2XL	3XL	4XL	5XL			
NECK (CM)	35-36	37-38	39-40	41-42	43-44	45-46	47-48	49-50	51-52			
1/2 CHEST (CM)	53	55	57	59	63	66	70	74	78			





CALAIS Boulevard



- 41721** LADIES 3/4 SLEEVE SHIRT
- 41722** LADIES SHORT SLEEVE SHIRT
- 41710** MENS LONG SLEEVE SHIRT
- 41712** MENS SHORT SLEEVE SHIRT

LADIES

- 60% Cotton 40% Polyester, easy care
- Dobby textured cotton blend
- Ladies semi-fitted design
- Trim on pocket vent and down placket

MENS

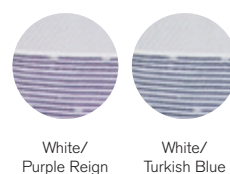
- 60% Cotton 40% Polyester, easy care
- Dobby textured cotton blend
- Mens executive-fit with front pocket
- Spread collar, inside placket and cuff trim, chevron outer fabric finish for cuff and yoke

LADIES	4	6	8	10	12	14	16	18	20	22	24	26
1/2 CHEST (CM)	44.2	45.5	48	50.5	53	55.5	58	61.5	64	66.5	69	71.5
MENS	XS	S	M	L	XL	2XL	3XL	4XL	5XL			
NECK (CM)	35-36	37-38	39-40	41-42	43-44	45-46	47-48	49-50	51-52			
1/2 CHEST (CM)	53	55	57	59	63	66	70	74	78			



HERNE BAY Boulevard

- 41820** LADIES LONG SLEEVE SHIRT
- 41821** LADIES 3/4 SLEEVE SHIRT
- 41810** MENS LONG SLEEVE SHIRT



LADIES

- 60% Cotton 40% Polyester, **double fold yarn**
- Textured cotton blend
- Ladies semi-fitted design
- Trim detail inside and outside collar stand
- Trim detail inside yoke, placket and inside cuff

MENS

- 60% Cotton 40% Polyester, **double fold yarn**
- Textured cotton blend
- Mens executive-fit with front pocket
- Trim detail inside and outside collar stand
- Trim detail inside yoke, placket and inside cuff
- Spread collar, 2 button adjustable cuff

LADIES	4	6	8	10	12	14	16	18	20	22	24	26
1/2 CHEST (CM)	44.2	45.5	48	50.5	53	55.5	58	61.5	64	66.5	69	71.5
MENS	XS	S	M	L	XL	2XL	3XL	4XL	5XL			
NECK (CM)	35-36	37-38	39-40	41-42	43-44	45-46	47-48	49-50	51-52			
1/2 CHEST (CM)	53	55	57	59	63	66	70	74	78			





HUDSON Boulevard



- 40310** LADIES LONG SLEEVE SHIRT
- 40311** LADIES 3/4 SLEEVE SHIRT
- 40320** MENS LONG SLEEVE SHIRT
- 40322** MENS SHORT SLEEVE SHIRT

LADIES

- 100% Cotton, yarn dyed dobby fabric
- Ladies semi-fitted open neck 'Y' front design
- Contrast fabric inside cuff
- Tonal contrast button stitch and hole
- Inverted pleat in back yoke for comfort

MENS

- 100% Cotton, yarn dyed dobby fabric
- Mens executive-fit design with spread collar
- Contrast fabric inside cuff, loose pocket
- Tonal contrast button stitch and hole
- Inverted pleat in back yoke for comfort

LADIES	4	6	8	10	12	14	16	18	20	22	24	26
1/2 CHEST (CM)	44.3	45.5	48	50.5	53	55.5	58	61.5	64	66.5	69	71.5
MENS	XS	S	M	L	XL	2XL	3XL	4XL	5XL			
NECK (CM)	35-36	37-38	39-40	41-42	43-44	45-46	47-48	49-50	51-52			
1/2 CHEST (CM)	53	55	57	59	63	66	70	74	78			





POLISHED PIECES

ACCESSORISE YOUR LOOK



SCARVES

- 99000 LADIES MONOTONE KNITTED SCARF
- 99001 LADIES TWO TONE SCARF



TIES

- 99104 MENS SLIM TIE
- 99100 MENS SPOT TIE
- 99103 MENS WIDE CONTRAST STRIPE TIE
- 99102 MENS SINGLE CONTRAST STRIPE TIE
- 99101 MENS SELF STRIPE TIE

LEATHER BELTS



99200 LADIES REVERSIBLE BELT



99300 MENS REVERSIBLE BELT

CUFFLINKS



99400 CUFFLINKS

FOR MORE DETAILS VISIT WWW.BIZCORPORATES.COM

LADIES BODY MEASUREMENT GUIDE

FIND THE RIGHT FIT FOR YOUR BODY TYPE WITH OUR MEASUREMENT GUIDE



HOW TO MEASURE

For an accurate body measurement, please keep the tape measure taut.

A. BUST

Measure under your arms and across shoulder blades, around the fullest part of your chest. Hold one finger between body and tape.

B. WAIST

Measure around your natural waistline while holding one finger between body and tape.

STYLE FITS

Our shirts and are available in fits to suit all body types.



FITTED

Shaped and close fitting to the contours of the body.



SEMI-FITTED

Gently shaped through the torso. Follows the contours of the body.



EASY FIT

Generous fit with a longer line. Straight through the torso.

SIZE CONVERSIONS

Please choose the size closest to your own body measurements.

Standard Sizing

	AUS/NZ	CA/US	AUS/NZ	CA/US	AUS/NZ	CA/US	AUS/NZ	CA/US	AUS/NZ	CA/US	AUS/NZ	CA/US	AUS/NZ	CA/US
	4	0	6	2	8	4	10	6	12	8	14	10	16	12
	XXS		XS		XS - S		S		M		L		L - XL	
	cm	in	cm	in	cm	in	cm	in	cm	in	cm	in	cm	in
Bust	76.5	30	79	31	84	33	89	35	94	37	99	39	104	41
Waist	58.5	23	61	24	66	26	71	28	76	30	81	32	86	34

Plus Sizing

	AUS/NZ	CA/US	AUS/NZ	CA/US	AUS/NZ	CA/US	AUS/NZ	CA/US
	18	14	20	16	22	18	24	20
	XL		2XL		3XL		4XL	
	cm	in	cm	in	cm	in	cm	in
Bust	111	44	116	46	121	48	126	50
Waist	93	37	98	39	103	41	108	43
	AUS/NZ	CA/US	AUS/NZ	CA/US	AUS/NZ	CA/US	AUS/NZ	CA/US
	26	22	28	24	30	26	32	28
	5XL							
	cm	in	cm	in	cm	in	cm	in
Bust	131	52	136	54	141	56	146	57
Waist	113	45	118	47	123	49	128	50

MENS BODY MEASUREMENT GUIDE

FIND THE RIGHT FIT FOR YOUR BODY TYPE WITH OUR MEASUREMENT GUIDE



HOW TO MEASURE

For an accurate body measurement, please keep the tape measure taut.

A. NECK

Measure around the middle of your neck at collar level, keeping the tape loose to make allowance for comfort.

B. CHEST

Measure under your arms and across shoulder blades, around the fullest part of your chest. Hold one finger between body and tape.

C. WAIST

Measure around your natural waistline while holding one finger between body and tape. Measure over shirt at position your pants would normally sit.

STYLE FITS

Our shirts and are available in fits to suit all body types.



EURO FIT

Slightly tapered through the torso, fitting to the contours of the body.



EXECUTIVE FIT

Gently shaped through the torso. Relaxed modern fit.

SIZE CONVERSIONS

Please choose the size closest to your own body measurements.

Shirts

	AUS/NZ	CA/US	AUS/NZ	CA/US	AUS/NZ	CA/US	AUS/NZ	CA/US	AUS/NZ	CA/US
	XS		S		M		L		XL	
	cm	in	cm	in	cm	in	cm	in	cm	in
Neck	35 - 36	14	37 - 38	15	39 - 40	15.5	41 - 42	16.5	43 - 44	17
Chest	87	34	92	36	97	38	102	40	107	42
	AUS/NZ	CA/US	AUS/NZ	CA/US	AUS/NZ	CA/US	AUS/NZ	CA/US		
	2XL		3XL		4XL		5XL			
	cm	in	cm	in	cm	in	cm	in		
Neck	45 - 46	18	47 - 48	19	49 - 50	19.5	51 - 52	20.5		
Chest	117	46	122	48	127	50	132	52		

GARMENT TO GARMENT COMPARISON

An alternate method is to compare your own garment size to ours. You can do this by measuring the 1/2 chest of your garment (laid flat, measured 1 cm below the sleeve join, from side seam to side seam) and compare it to ours. Please refer to the individual garment measurements, shown on each style page, to determine your garment to garment size comparison.

All measurements in this catalogue are approximate and are for reference only. Our size charts are a guide only and sizing may vary according to the style, fabric and fit of the actual garment.



CORPORATE STYLING

— LET US THREAD YOUR TEAM OR STAFF WITH A WINNING LOOK —