

# HOSPITALITY



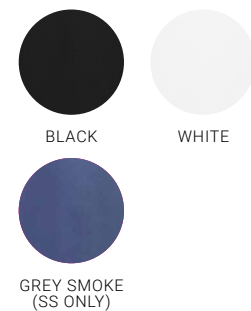
# ALFRESCO CHEF JACKET NEW



**CH330ML**      MENS LS  
**CH330MS**      MENS SS  
**CH330LL**      WOMENS LS  
**CH330LS**      WOMENS SS

**FABRIC** 65% Certified Recycled PET Polyester, 35% Cotton Twill  
 • 160 GSM • UPF Rating: 50+

**FEATURES** Concealed zip front closure delivers a clean minimalist look  
 • Lightweight twill cloth with underarm mesh ventilation keeps you cool where you need it most  
 • Mandarin collar with apron tab to hold apron in place  
 • 2 Sleeve thermometer/pen pockets  
 • Long length with side splits for ease  
 • Long sleeve style features roll-up sleeve function with inside tab and button



**This garment has been made using recycled polyester resulting in the equivalent of up to 18 plastic bottles being diverted from landfill.**

CH330ML, CH330MS MENS MODERN FIT	XS	S	M	L	XL	2XL	3XL	4XL
GARMENT ½ CHEST (CM)	53.5	56	58.5	61	63.5	67	71	75
CH330LL, CH330LS WOMENS MODERN FIT	XS	S	M	L	XL	2XL		
GARMENT ½ CHEST (CM)	46	49.5	53	56.5	61.5	66.5		

*Keep it cool and efficient in the kitchen with this lightweight, zip front chef jacket. Made from cotton and recycled yarn that's both durable and comfortable.*

HOSPITALITY



# AL DENTE CHEF JACKET



Well-fitting and durable, this traditional chef jacket is a work horse designed to last through the longest of shifts. Added apron tab and double sleeve pockets for a perfect functional allrounder.



**CH230ML**      MENS  
**CH230LL**      WOMENS

**FABRIC** 65% Polyester, 35% Cotton Twill • 220 GSM • UPF Rating: 50+

**FEATURES** Traditional double-breasted front • Full length sleeve with turn back cuffs  
 • Mandarin collar with apron tab to hold apron in place • 2 Sleeve thermometer/pen pockets  
 • Matching plastic stud buttons • Long length with side splits for ease

CH230ML MENS MODERN FIT	XS	S	M	L	XL	2XL	3XL	4XL
GARMENT ½ CHEST (CM)	53.5	56	58.5	61	63.5	67	71	75
CH230LL WOMENS MODERN FIT	XS	S	M	L	XL	2XL		
GARMENT ½ CHEST (CM)	46	49.5	53	56.5	61.5	66.5		



BLACK



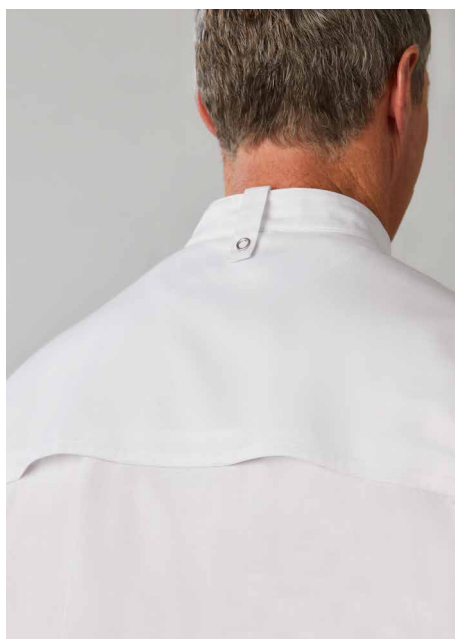
WHITE



WHITE/BLACK  
 (MENS ONLY)



# ZEST CHEF JACKET



**CH232MS**      MENS SS  
**CH232ML**      MENS LS  
**CH232LS**      WOMENS SS

**FABRIC** 65% Polyester, 35% Cotton Twill • 180 GSM • UPF Rating: 50+

**FEATURES** Lightweight fabric with vented back mesh panels • Underarm mesh inserts for added airflow • Snap-front double-breasted style • Short sleeve or long sleeve with turn back cuff options • Mandarin collar with apron tab to hold apron in place • 2 Sleeve thermometer/pen pockets • Long length with side splits for ease

CH232MS, CH232ML MENS MODERN FIT	XS	S	M	L	XL	2XL	3XL	4XL
GARMENT ½ CHEST (CM)	53.5	56	58.5	61	63.5	67	71	75
CH232LS WOMENS MODERN FIT	XS	S	M	L	XL	2XL		
GARMENT ½ CHEST (CM)	46	49.5	53	56.5	61.5	66.5		



BLACK



WHITE

*Lightweight cloth with a mesh vented back will keep you feeling fresh and comfortable even on the busiest days. Underarm mesh panels ensure extra airflow where you need it most.*

HOSPITALITY



# SALSA CHEF SHIRT

NEW

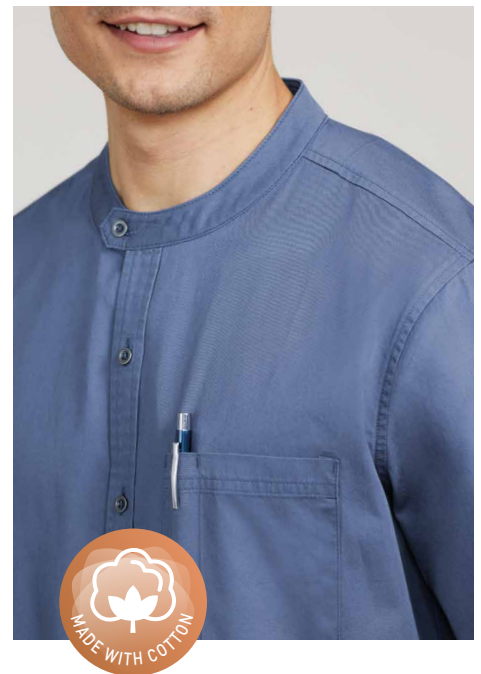


YES  
CHEF



From front of house to back, this 100% cotton, functional chef shirt works hard while you look cucumber-cool in this effortless style.

HOSPITALITY



**CH329MS**      UNISEX

**FABRIC** 100% Cotton Twill • 154 GSM • UPF Rating: 50+

**FEATURES** Lightweight cotton is durable and naturally breathable • Minimalist collar design with button tab  
 • Button through shirt with chest pocket • One sleeve thermometer/pen pocket • Long length with curved hem



BLACK



WHITE



GREY SMOKE

CH329MS UNISEX MODERN FIT	XS	S	M	L	XL	2XL	3XL	4XL
GARMENT ½ CHEST (CM)	52	54.5	57	59.5	63.5	67.5	71.5	75.5

# DASH CHEF PANT



**CH234M**  
**CH234L**

**MENS**  
**WOMENS**

**FABRIC** 65% Polyester, 35% Cotton • 180 GSM • UPF Rating: 50+

**FEATURES** Modern loose-fit pull-on style • Wider elasticated waistband with drawstring for a comfortable fit • 2 Deep side pockets and 2 back patch pockets • Dedicated womens or unisex mens fit options • Full length with straight hem for easy alterations

CH234M MENS REGULAR FIT	XS	S	M	L	XL	2XL	3XL	4XL
GARMENT ½ WAIST RELAXED (CM)	34	37	40	43	46	49.5	53	56.5
GARMENT ½ WAIST STRETCHED (CM)	49	52	55	58	61	64.5	68	71.5
CH234L WOMENS REGULAR FIT	XS	S	M	L	XL	2XL		
GARMENT ½ WAIST RELAXED (CM)	32	35	38	41	44.5	48		
GARMENT ½ WAIST STRETCHED (CM)	47.5	50.5	53.5	56.5	60	63.5		



BLACK



WHITE  
(MENS ONLY)



CHECK

*Comfort is key with these modern, loose fitting chef pants.  
Lightweight and durable with deep side pockets and a  
gently elasticated waist for that cool casual look.*

HOSPITALITY



**YES  
CHEF**

# FLAT TOP HAT

The go-to hat for many chefs. This classic flat top style has an elasticated back for a comfortable all day fit.



**CH238** UNISEX

**FABRIC** 65% Polyester, 35% Cotton • 180 GSM  
• UPF Rating: 50+

**FEATURES** Versatile chefs hat with a wide band and flat top  
• Elasticated back band for a comfortable fit • One Size



BLACK



WHITE



CHECK

**CH238 UNISEX**

**ONE SIZE**

CIRCUMFERENCE RELAXED (CM)

58

CIRCUMFERENCE STRETCHED (CM)

63

# MESH FLAT TOP HAT

NEW

Keep a cool head in any situation with this ventilated mesh topped hat.



**CH333** UNISEX

**FABRIC** Main: 65% Certified Recycled PET Polyester, 35% Cotton Twill • Trim: 100% Polyester Mesh

**FEATURES** Classic flat top shape with mesh panel to allow air-flow  
• Wide band with elasticated back for a comfortable fit • One Size

**CH333 UNISEX**

**ONE SIZE**



BLACK



WHITE



# CHEF BANDANA

NEW

HOSPITALITY

*Fight the fringe with this streetwear inspired bandana headband that helps keep sweat at bay and your focus where it should be.*



## CH331 UNISEX

**FABRIC** 65% Certified Recycled PET Polyester, 35% Cotton Twill

**FEATURES** Ergonomically shaped headband with elastic at back to keep it in place • Adjustable self-ties for a customisable fit • One Size

CH331 UNISEX	ONE SIZE
CIRCUMFERENCE RELAXED (CM)	55
CIRCUMFERENCE STRETCHED (CM)	62



BLACK



WHITE



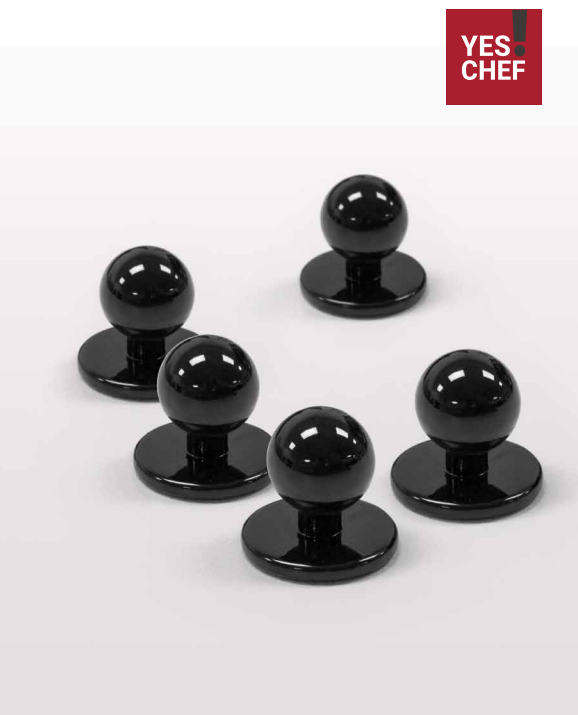
GREY SMOKE



RED

# CHEF BUTTON

*Replacement stud buttons for your classic chef's jacket.*



## CH235 BUTTON

**FEATURES** Interchangeable stud buttons • Suitable for traditional button front chef jackets • Supplied as 100 pcs per order



BLACK



WHITE

# YES! CHEF

BY BIZ COLLECTION



# SAY YES!

*Yes!Chef is our range of culinary apparel designed for the industry professional. A staple in every kitchen, these classic, well-fitting pieces always perform and never look out of place. Tried and tested and made to work as long and hard as you do.*



**FIND MORE  
INSPIRATION  
FROM OUR  
YES! CHEF!  
GUIDE ONLINE**

**Oscar (left) wears:**

CH232ML Zest Chef L/S Jacket in White  
CH234M Dash Chef Pant in Black

**Estelle (middle) wears**

S912LL Regent L/S Shirt in White  
BA54 Urban Waist Apron in Slate  
BA51 Urban Waist Apron Strap in Red

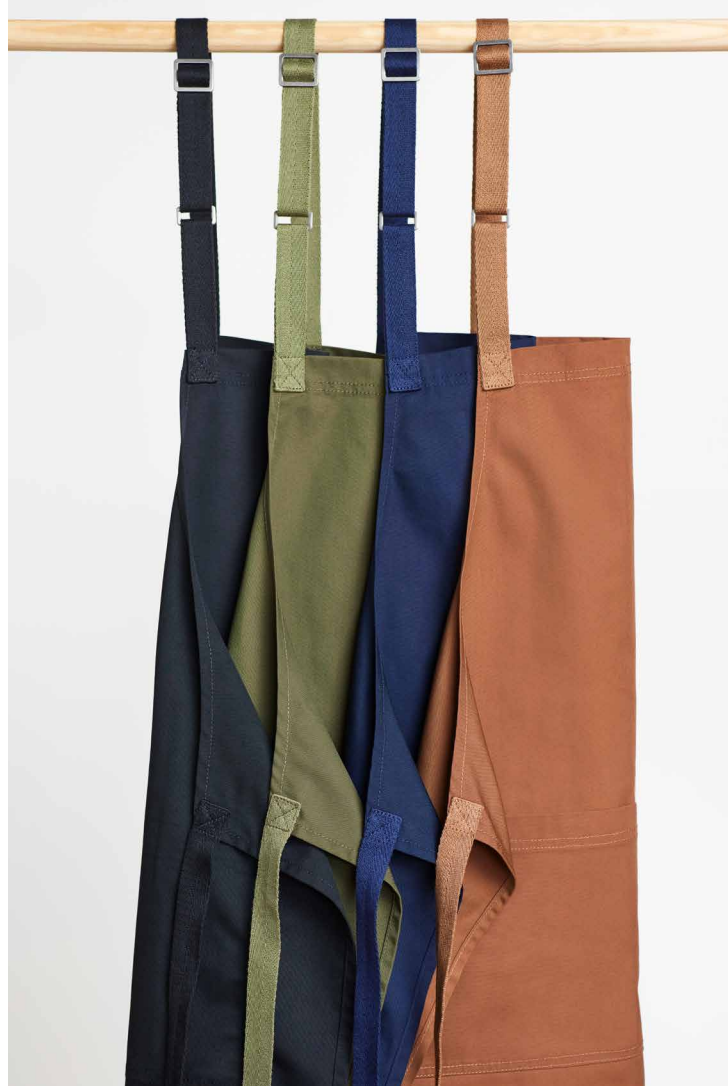
**TJ (right) wears:**

CH232MS Zest Chef S/S Jacket in White  
BA95 Bib Apron in Red



# BARLEY APRON

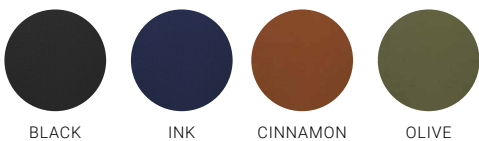
NEW



## BA35 APRON

**FABRIC** 80% Certified Recycled PET Polyester, 20% Cotton Canvas • 250 GSM

**FEATURES** Classic bib apron style with adjustable neck strap • No-fade\* durable canvas twill (\*Tested to 100 washes) • Simple tone on tone polyester/cotton herringbone straps with reinforced stitching for durability • Large split front pocket to hold POS or order pen/pads • Free Size 85cm x 73cm





*With beauty in its simplicity, our Barley apron is made from no-fade\*, durable canvas that doesn't compromise your uniform style.*

HOSPITALITY



# URBAN BIB APRON



Designed with cool, street-style edge, and interchangeable straps so you can customise your look. Hardwearing, textured fabric is durable, colourfast and built to withstand the busiest of environments.



**BA55 BIB APRON**

**FABRIC** 50% Cotton, 50% Polyester • 185 GSM • Textured Fabric

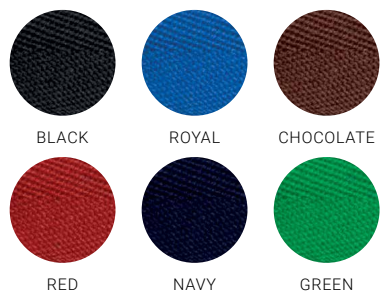
**FEATURES** Comes with removable self-fabric X-back straps  
 • Divided front pocket • Reinforced stitching and antique brass fittings  
 • Free size 80cm x 90cm • Interchangeable mix 'n match  
 BA52 bib apron straps available



**BA52 BIB STRAPS**

**FABRIC** 100% Polyester Twill Tape

**FEATURES** Interchangeable straps for use with BA55 Urban Bib Apron • Matching antique brass fittings  
 • Strap length 148cm • Straps come packaged in pairs





# URBAN WAIST APRON





Designed with cool, street-style edge, this practical waist apron features interchangeable straps so you can customise your look. Colourfast and built to withstand the busiest of environments.



**BA54 WAIST APRON**

**FABRIC** 50% Cotton, 50% Polyester • 185 GSM • Textured Fabric

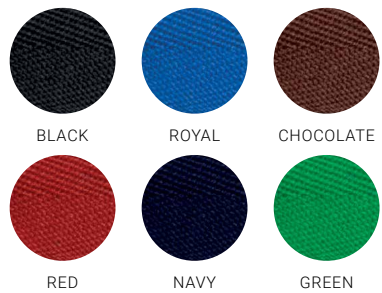
**FEATURES** Comes with removable self-fabric waist straps  
 • Divided front pocket • Reinforced stitching and antique brass fittings • Free size 80cm x 44cm • Interchangeable mix 'n match BA51 waist apron straps available



**BA51 WAIST STRAPS**

**FABRIC** 100% Polyester Twill Tape

**FEATURES** Interchangeable straps for use with BA54 Urban Waist Apron • Matching antique brass fittings  
 • Strap length 90cm • Straps come packaged in pairs



# BIB APRON



## BA95 APRON

**FABRIC** 65% Polyester, 35% Cotton Twill • 190 GSM

**FEATURES** Bib apron with adjustable halter self-fabric strap around neck • Unique styling • Towel loop at back of apron • 1 Large central front pocket with special side slide pen and bottle opener provision • Free size 97cm x 86cm





*This essential bib apron is the perfect companion for any culinary activity. Choose classic black or go bold and bright for instant energy. A useful basic that punches well above its weight.*

HOSPITALITY





# SALT APRON



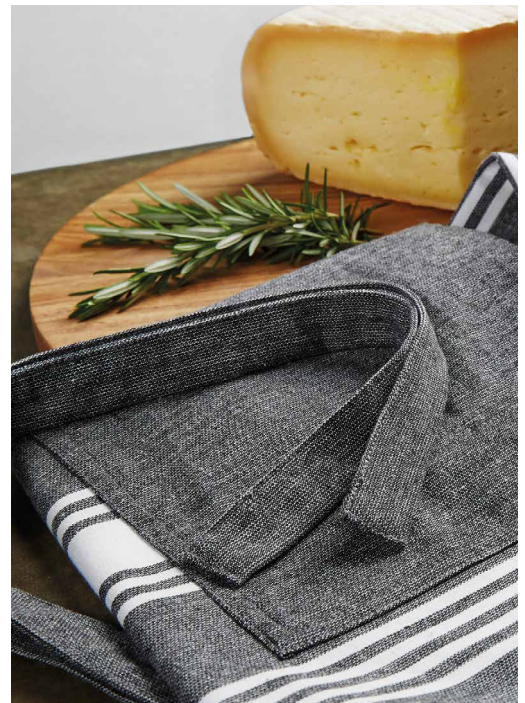
\*STRIPE PLACEMENT VARIES PER APRON

*Butcher, Baker or Candle Maker? Our Salt Apron is designed to be as distinctive as you with wide 'salt n pepper' chambray statement stripes that are visually memorable and unique.*

HOSPITALITY



**STYLE TIP** Worn with Black Indie denim shirt P86



## BA75 BIB APRON

**FABRIC** 100% Cotton • Quality Textured Fabric • 240 GSM

**FEATURES** Unique chambray statement stripe apron

- Contrast divided front pocket with reinforced stitching
- Attached straps with adjustable D-ring neck loop
- Free size 93cm x 70cm



CHARCOAL/  
WHITE



# CONTINENTAL APRON

*Designed with European flair, this apron is both unique and practical. Full length with a split front and a fold over waist that keeps straps tucked away for a neat, sophisticated appearance.*



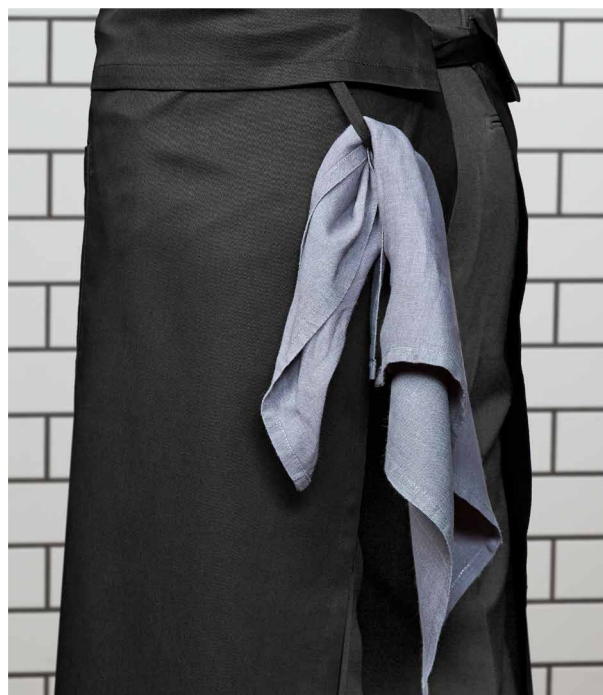
## BA93 APRON

**FABRIC** 65% Polyester, 35% Cotton Twill  
• 190 GSM

**FEATURES** Full length style with refined fold-over waist  
• Central stride split for ease of movement  
• Towel loop at back of apron  
• Central front pocket with provisions for pen/bottle opener  
• Free size 86cm x 86cm



BLACK





# SHORT WAISTED APRON

*An essential black waist apron is a must have in any food service industry. Made from reliable, colourfast poly cotton twill and featuring large front pocket and a handy loop.*



## BA94 APRON

**FABRIC** 65% Polyester, 35% Cotton Twill  
• 190 GSM

**FEATURES** Short waisted, above the knee length • Unique styling • Towel loop at back of apron • 1 Large central front pocket with special side slide pen and bottle opener provision • Free size 86cm x 50cm



BLACK